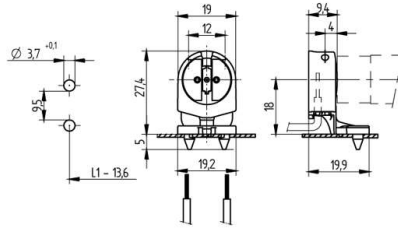
 Create pdf

Lampholders and starter holders

26.662.2002

G 5 Push in lampholders



L1-13.6: Recommended dimension - The distance between the cut-outs and the tolerance should be governed by the dimensions of the respective lamps and luminaires.

colour	pkg.	wt.	part no.
white	1000	3 g	26.662.2002.50

Approval: additional cULus (120W / 600V)

Wiring: through the body

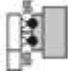




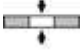

Lamp centre: 18 mm

Snap in pins

Housing: PC

Rotor: PBT

- Wiring above the mounting plate is also possible
- Snap in pins for IP 40
- A pair of lampholders provides a lamp length tolerance compensation of 2 mm

T 130	Tm 110					 18 AWG 0.5 - 1.0 mm ²	 0.6 - 1.0	
-------	--------	---	---	---	--	--	--	---

Document generated on: We, 8. February 2017 - 14:10